

ONONDAGA COUNTY LAKEVIEW AMPHITHEATER

STATE ENVIRONMENTAL QUALITY REVIEW (SEQR)

Draft Environmental Impact Statement (DEIS) Public Hearing



Legislative Chambers (Court House Room 407)

Wednesday July 23, 2014

<http://www.ongov.net/environment/amphitheater.html>



PRESENTATION OVERVIEW

- Steps in the SEQR Process
 - Past steps
 - Current
 - Future steps
- General Project Information
 - Purpose and Need
 - Location
 - Description
- DEIS Content
 - Summary of impact evaluations and mitigation measures
- Commenting on the DEIS





SEQR PROCESS

Steps so far...

FEBRUARY 2014

- Onondaga County prepared and **EAF** and circulated **Notice of Intent** to serve as **Lead Agency** for SEQR Review of the **Lakeview Amphitheater** project

APRIL 2014

- Onondaga County issued a **Positive Declaration**
 - ✓ Onondaga County issued **Draft Scoping Document**
 - ✓ Public Comment Period on Scoping Document

MAY 2014

- Onondaga County issued **Final Scoping Document**





SEQR PROCESS

Current Steps ...

JULY 1, 2014

- Onondaga County deemed the **Draft Environmental Impact Statement (DEIS)** complete

JULY 9 – AUGUST 11, 2014

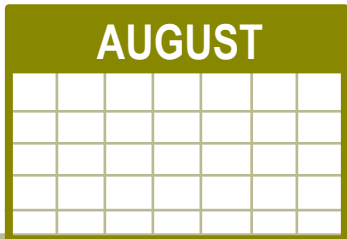
- **Public Comment Period** on DEIS
 - ✓ DEIS available for review at:
 - Solvay Public Library
 - Onondaga County Website
<http://www.ongov.net/environment/amphitheater.html>
 - ✓ **DEIS Public Hearing**
 - July 23, 11:00 a.m., Legislative Chambers (Court House Room 407)
 - ✓ **Public Comment Period Ends August 11, 2014**





SEQR PROCESS

Future steps (anticipated timeframes)...



- Conclude **DEIS** Public Comment Period



- Working Period for **Final Environmental Impact Statement (FEIS)**



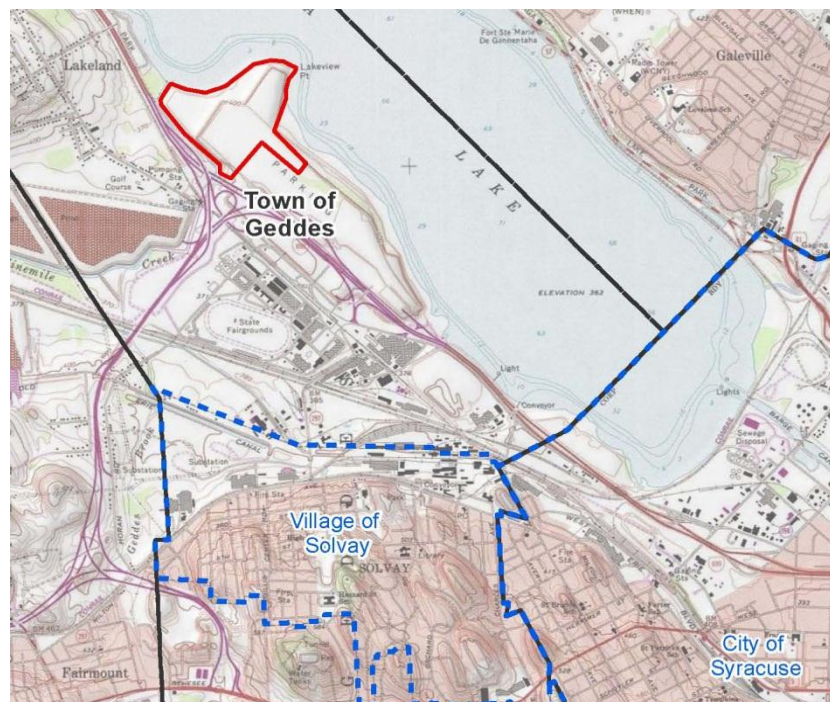
- Issue **FEIS**
- Issue **SEQR Findings Statement**





PROJECT PURPOSE AND NEED

- Enhance public access to the west shore of Onondaga Lake.
- Take advantage of new opportunities created by lakeshore remediation and restoration efforts.
- Further economic opportunity and revitalization in the Town of Geddes, Village of Solvay, and surrounding area.



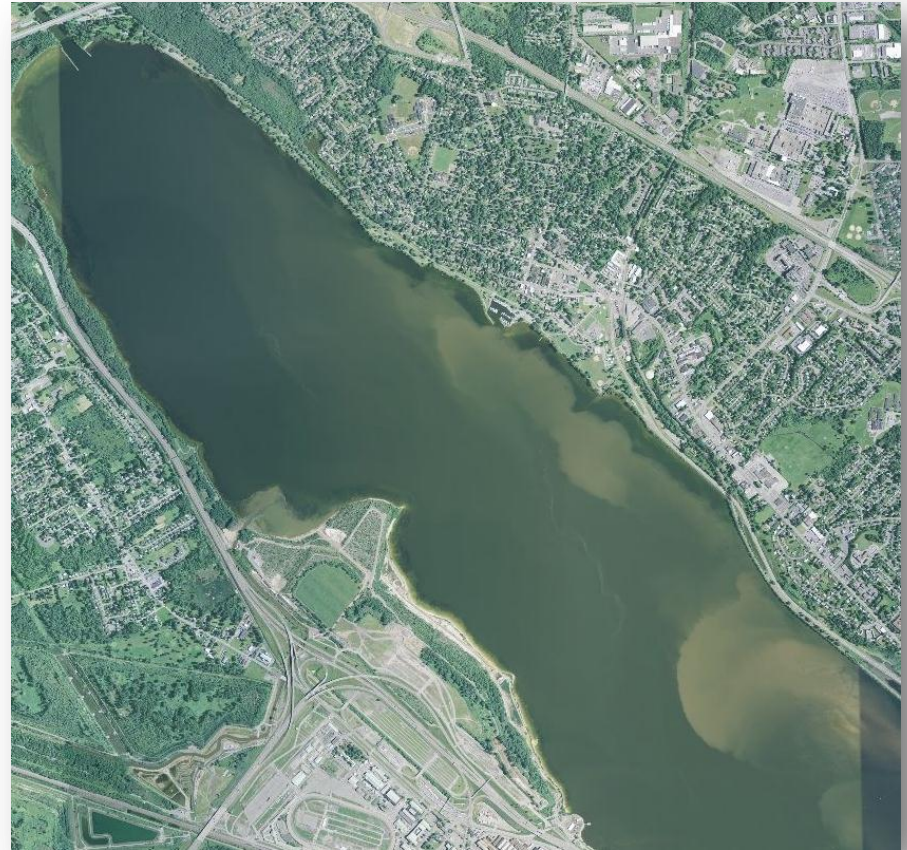
<http://www.ongov.net/environment/amphitheater.html>





PROPOSED PROJECT LOCATION

- The Project site is situated along the western shore of Onondaga Lake, on Lakeview Point. It is north of the existing New York State Fairgrounds parking lots and east-southeast of the mouth of Nine Mile Creek.
- The site consists of land currently owned by Onondaga County. The site is largely vacant except for the new multi-use recreational trail, which will be integrated into the Project design.
- The site has historically been used for the Solvay Process wastebeds and Crucible Steel landfill.





PROPOSED PROJECT DESCRIPTION

- The Lakeview Amphitheater will be an outdoor event complex.
- The amphitheater will have an estimated seating capacity of approximately 17,500 (both covered and lawn seats).
- The complex will also include a nature area, a vendor/festival area, a smaller outdoor community theater, recreational trails, an observation pier, and other amenities.





TOPICS ADDRESSED IN THE DEIS:

- Geology, Soils, and Topography
- Water Resources
- Climate and Air Quality
- Biological, Terrestrial, and Aquatic Ecology
- Visual and Aesthetic Resources
- Historic, Cultural, and Archeological Resources
- Open Space and Recreation
- Traffic and Transportation
- Noise and Odor
- Documented Environmental Conditions
- Public Health and Safety
- Land Use and Zoning
- Growth and Character of the Community
- Community Facilities and Services
- Alternatives





GEOLOGY, SOILS, AND TOPOGRAPHY

(DEIS SECTION 3.1)

Potential Impacts



Proposed Avoidance/Mitigation Measures

- Project construction is anticipated to disturb a total of up to 120 acres. Potential impacts could include disturbance of contaminated materials and/or elements of the site remedies, increased loads on site soils.
- Site operations will involve vehicle traffic and pedestrian traffic during scheduled events. Impacts associated with this type of use include surface soil disturbance, litter, and stress/damage to vegetation.

- Design of the surface and subsurface features are being coordinated with technical staff of Honeywell and the involved state and federal agencies, and will be implemented in conjunction with existing and proposed remedies for the site.
- Construction work will be consistent with a NYSDEC-approved Site Management Plan developed as part of the remediation effort for the larger Waste Bed 1-8 area, a site-specific Stormwater Pollution Prevention Plan, and the statewide State Pollution Discharge Elimination System Stormwater General Permit.
- Site maintenance associated with amphitheater operations will be provided through the Onondaga County Parks Department. Remedy maintenance will be provided by Honeywell.





WATER RESOURCES

(DEIS SECTION 3.2)

Potential Impacts



- During construction, the majority of the site will be covered with imported fill forming the desired grades and surface features.
- The Project will increase impervious surfaces at the site, and as a result, storm water runoff flows are expected to increase.
- The most common water quality issue associated with construction is erosion and sedimentation control in the areas disturbed by construction.

Proposed Avoidance/Mitigation Measures

- Groundwater and surface water quality should be enhanced through placement of surface features, covering of impacted surface soils, reduced infiltration and percolation, and by sustainable design of stormwater management systems and structures.
- Plans for stormwater mitigation at the site will developed with the assistance of NYSDEC Division of Water Quality personnel and approved in concept by NYSDEC Region 7 prior to final design.
- Site maintenance by the Parks Department during operations will utilize the County's Integrated Pest Management (IPM) approach.





CLIMATE AND AIR QUALITY (DEIS SECTION 3.3)

Potential Impacts

- No significant effects on climate.
- During Project construction, temporary impacts to air quality may result from the operation of equipment and vehicles, which could increase emissions from engine exhaust and/or generate fugitive dust.
- Once the Project becomes operational, sporadic short-term increases in vehicle exhaust and fugitive dust may result from the increased traffic and parking during scheduled events.

Proposed Avoidance/Mitigation Measures

- Exclusion zones limiting public access to the Project site will be designated and enforced during certain phases of construction, thereby limiting public exposure to fugitive dust.
- A dust control program will be implemented to control fugitive dust during construction. Control measures will include the application of mulch, water, stone, or approved chemical agents on access roads, exposed soils, or stockpiled soils when dry and windy conditions exist.
- If these mitigation efforts do not succeed in reducing dust emissions to acceptable levels, work may be suspended until conditions improve or additional successful mitigation methods are incorporated.
- Vehicle speed will be restricted to 10 mph on-site.





BIOLOGICAL, TERRESTRIAL, AND AQUATIC ECOLOGY

(DEIS SECTION 3.4)

Potential Impacts



Proposed Avoidance/Mitigation Measures

- Up to 70 acres of vegetated land will be converted to lawns, parkland and built facilities. All of the plant species observed at the Project site are common.
- Limited impacts to wildlife are anticipated, including habitat loss and displacement.
- Potential impact to tree roosting bats during site clearing, including protected species.

- Development plans recognize existing/ongoing disturbance on-site, and will serve to maximize protection/integration of natural communities to the extent practicable.
- Mitigation for impacts related to habitat loss will be accomplished through careful site design, restoration of all temporarily disturbed areas, and coordinating restoration efforts with the long-term remedy to be implemented by Honeywell.
- Buildings will incorporate bird-friendly design.
- To avoid impacts to protected bat species that could be roosting in trees at the Project site, tree cutting will be restricted to between October 15 and March 31, when Indiana and northern long-eared bat are hibernating off-site, consistent with state/federal mitigation guidelines.





EXAMPLES OF EXISTING DISTURBANCE AND HABITAT WITHIN PROJECT AREA





VISUAL AND AESTHETIC RESOURCES

(DEIS SECTION 3.5)

Potential Impacts



Proposed Avoidance/Mitigation Measures

- The vegetative viewshed analysis indicates that the study area will have views of the amphitheater.
- Based on field review, Project visibility will be more limited than suggested by viewshed mapping.
- During events, the Project will include significant lighting. Some exterior lighting will also be necessary for security and public safety during periods when the facility is not in use.

- To minimize potential nighttime lighting impacts when the facility is not in use, exterior lighting will be restricted to the minimum level required to provide security and safety. In addition, all lighting fixtures associated with pedestrian pathways, roads, parking areas, and building exterior areas for the proposed facility will be shielded or fitted with opaque hoods, shields, louvers, shades, and/or other devices so that light generated by the light source is directed downward and not outward horizontally.
- Project visibility and visual contrast with the existing landscape do not equate to an adverse visual impact in this situation. Therefore, no formal mitigation measures are proposed.





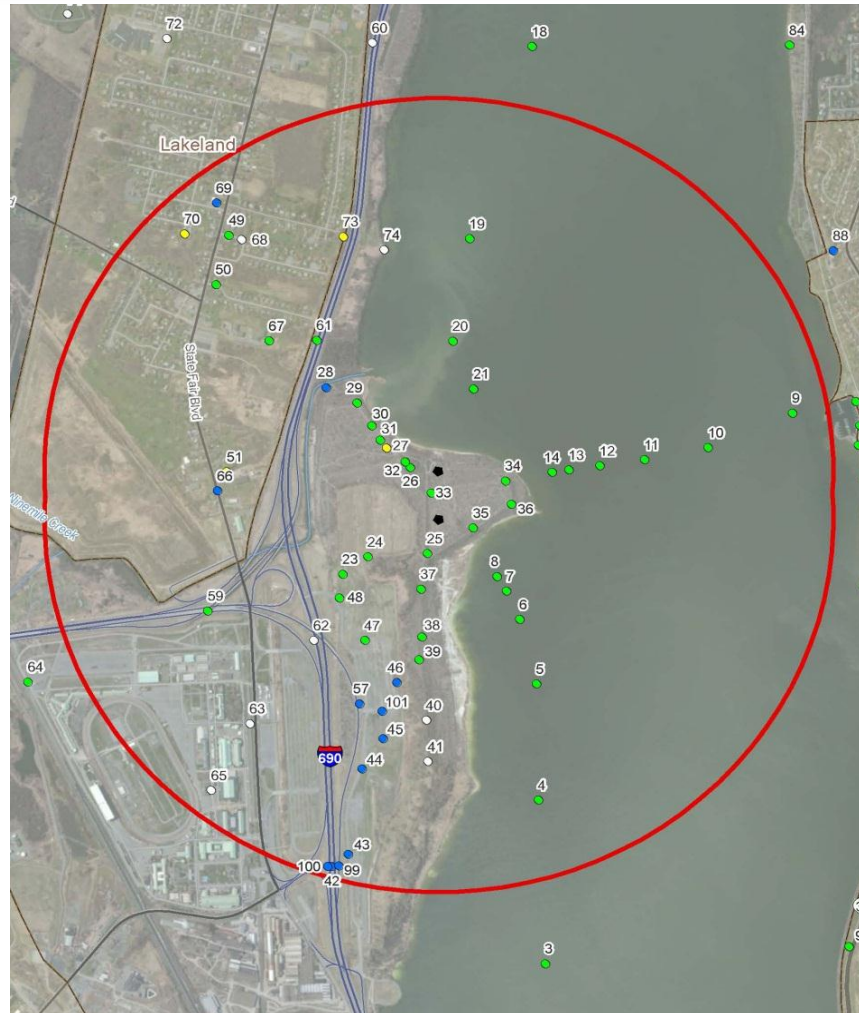
VISUAL ASSESSMENT BALLOONING AND FIELD REVIEW



<http://www.ongov.net/environment/amphitheater.html>



VISUAL ASSESSMENT BALLOONING AND FIELD REVIEW





HISTORIC, CULTURAL, AND ARCHAEOLOGICAL RESOURCES

(DEIS SECTION 3.6)

Potential Impacts



Proposed Avoidance/Mitigation Measures

- Seven previous archeological studies conducted at the Solvay Process Wastebeds indicate it is unlikely that intact archeological sites are within the Project Area.
- There are no historic-architectural resources located within or adjacent to the Project site.
- In a March 31, 2014 letter, NYSOPRHP stated that the proposed Project “will have **No Impact** on upon cultural resources in or eligible for inclusion in the State and National Register of Historic Places”.

- Construction and operation of the proposed Project will not result in any significant impacts to identified historic or archeological resources. Consequently, no further mitigation measures are proposed.
- Consultation in accordance with Section 106 of the National Historic Preservation Act and Section 14.09 of the New York State Historic Preservation Law as applicable.





OPEN SPACE AND RECREATION (DEIS SECTION 3.7)

Potential Impacts



Proposed Avoidance/Mitigation Measures

- There may be some impacts to the new multi-use trail during Project construction, such as temporary closures or minor relocation of some sections of the trail.
- By adding structures and access roads/paths, the proposed facility will result in minor reductions of open space at the Project site.
- The Lakeview Amphitheater will enhance recreational opportunities in the Central New York region by providing the infrastructure necessary to host concerts, festivals, and other events, and to support use of the West Shore Trail.
- Since overall impacts to open space and recreation from the proposed Project are believed to be positive, no mitigation measures are proposed.





TRAFFIC AND TRANSPORTATION

(DEIS SECTION 3.8)

Potential Impacts



Proposed Avoidance/Mitigation Measures

- No adverse traffic impacts are expected during construction.
- During sold-out events, flow impacts on arrival traffic can be expected for those trying to access the Orange Lot from Bridge Street and Willis Avenue, as well as for those trying to access the Brown Lot from State Fair Boulevard west and Pumphouse Road. Impacts to the I-690 mainline are also likely.
- Departure traffic should not impact I-690 mainline operations in either direction; delays will be limited to attendees leaving the parking lots.

- In order to avoid impacts to the I-690 mainline, various mitigation scenarios were developed.
- Police officers will manually control key intersections in the area, and temporary event signage will be used to direct traffic into appropriate lanes.
- Existing dynamic message signs (DMS) on the I-690 mainline will be utilized to direct traffic in real-time and warn motorists of potential slowdowns. A new DMS should be installed on NYS RT 695 north.
- Transit buses will be used to shuttle attendees between the Brown Lot and the facility.
- Additional capital improvement recommendations would further mitigate traffic impacts both for events at the facility and at the State Fairgrounds.





NOISE AND ODOR (DEIS SECTION 3.9)

Potential Impacts



Proposed Avoidance/Mitigation Measures

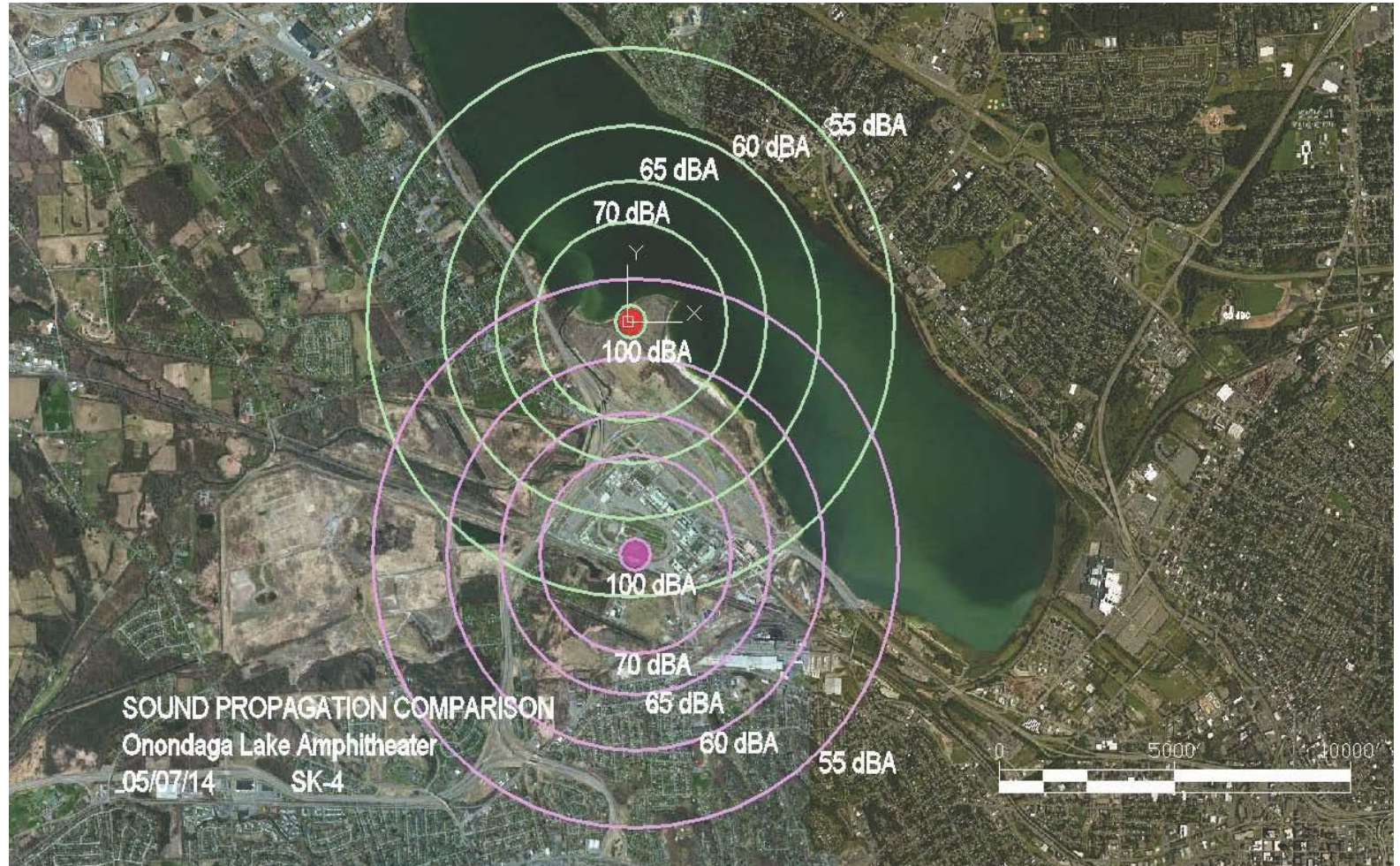
- No significant adverse odor impacts are expected.
- Construction noise has the potential to disturb people in the vicinity of the site. The equipment is similar to what is currently operating at or near the site.
- There are some residential areas along State Fair Boulevard in Lakeland where maximum sound levels during concerts are predicted to exceed the 65 dBA threshold recommended for residential areas by the NYSDEC.

- Should noise-related impacts occur, sound level monitoring can be implemented. A database of sound impacts could then be used to alter future soundstage setups to mitigate impacts, most likely the loudspeakers projecting to lawn seats.
- Given the temporal and intermittent nature of these events, public notice can be given to receptors in the area concerning times and dates for performances to allow for effective planning and avoidance.





SOUND PROPAGATION MODELING





DOCUMENTED ENVIRONMENTAL CONDITIONS

(DEIS SECTION 3.10)

Potential Impacts



- Construction of the project will involve some intrusive work associated with installation of utilities, preliminary site grading, and installation of foundations.
- Operation of the facility will take place after the site remedies are in place, and will not result in major impacts with regard to the environmental contaminants at the site.

Proposed Avoidance/Mitigation Measures

- Prior to any intrusive work, the contractor must prepare a plan for the removal and proper disposal of any waste materials that are determined to be present at locations and concentrations indicative of a potential hazard.
- During certain phases of construction, public access will be limited to designated areas.
- Fuel, lubricants, and any other construction-related chemicals, will be stored in specified, secondarily contained locations, and fueling and maintenance of equipment will be conducted at locations distant from the excavations so that spills or overfills can be cleaned up effectively.





PUBLIC HEALTH AND SAFETY

(DEIS SECTION 3.11)

Potential Impacts



Proposed Avoidance/Mitigation Measures

- The EPA prepared a Supplemental Human Health Risk Evaluation as an addendum to the 2011 Human Health Risk Assessment, reflecting current information on site conditions and the intended use of the Wastebed 5 and 6 areas for the amphitheater.
- <http://www.epa.gov/region2/superfund/npl/onondagalake/docs.html>
- This report concludes that the potential risks for attendees of events and maintenance workers are expected to be within acceptable risk ranges and targets.
- The study recommends that construction workers utilize protective measures while engaging in certain construction activities.
- During certain phases of construction, public access will be limited to designated areas.
- Site security will be enhanced through design features which include fencing, specific area lighting, video surveillance, emergency communications network, and routine police/park ranger patrols.





EPA WEBSITE REFERENCED IN DEIS SECTION 3.11 (PUBLIC HEALTH AND SAFETY)

EPA United States Environmental Protection Agency

ALL EPA THIS AREA Advanced Search

LEARN THE ISSUES | SCIENCE & TECHNOLOGY | LAWS & REGULATIONS | ABOUT EPA

SEARCH

Region 2 Superfund [Contact Us](#) [Share](#)

Serving New Jersey, New York, Puerto Rico, US Virgin Islands and Eight Tribal Nations.

You are here: [EPA Home](#) » [Region 2](#) » [Superfund](#) » [Find Sites](#) » Onondaga Lake

Onondaga Lake Superfund Site

Onondaga County, New York

You will need the free Adobe Reader to view some of the files on this page. See [EPA's PDF page](#) to learn more.

New! Lower Ley Creek Proposed Plan [6.7 MB, 27 pp]	July '14
Remedial Investigation Report – Lower Ley Creek subsite [7.3 MB, 568 pp]	June '13
Feasibility Study Report – Lower Ley Creek subsite [14 MB, 318 pp]	Mar '14
Feasibility Study Supplement – Local Disposal Cost Breakdown [190 KB, 7 pp]	July '14
Ecological Risk Assessment – Lower Ley Creek subsite [16 MB, 210 pp]	Feb '11
Human Health Risk Assessment – Lower Ley Creek subsite [10 MB, 423 pp]	Sept '12
Supplemental Human Health Risk Evaluation, Lakeview Amphitheater Facility [149 KB, 10 pp]	June '14
<ul style="list-style-type: none"> • Figure 1: Site Location [583 KB, 1 pp] • Figure 2: Facility Location [872 KB, 1 pp] • Figure 3: Exposure Areas [364 KB, 1 pp] • Figure 4: Exposure Areas and Sampling Locations [718 KB, 1 pp] 	
Review of June 2010 Supplemental Human Health Risk Assessment [1.74 MB, 31 pp]	May '13

More Information

- [Home](#)
- [Fact Sheet \(PDF 19 KB, 4 pp\)](#)
- [Additional Documents](#) including Determination to Not Take Superfund Action
- [News](#)

Public Meeting

Lower Ley Creek Proposed Plan Mtg
Tuesday, July 29, 2014 at 7pm
Town of Salina Town Hall
201 School Road, Liverpool

Related EPA Web Sites

- [EPA Region 2 Water Page: Onondaga Lake](#)





LAND USE AND ZONING

(DEIS SECTION 3.12)

Potential Impacts



- Construction activities are expected to have temporary impacts on land use in the Project site and the adjacent parking area.
- Operation of the proposed facility will change land use at the Project site by converting a large, vacant parcel on the lakeshore into an area utilized by the public periodically for special performance events. The frequency of use of the adjacent parking facilities will increase from largely only during the annual State Fair to whenever there is an event at the Amphitheater.

Proposed Avoidance/Mitigation Measures

- The proposed Project is consistent with existing land uses and land use regulation of the Project site and adjacent areas. Due to this consistency, no significant impacts to land use are expected, and no mitigation measures are proposed.





GROWTH AND CHARACTER OF THE COMMUNITY

(DEIS SECTION 3.13)

Potential Impacts



Proposed Avoidance/Mitigation Measures

- The Project is generally consistent with the land use and community character of the areas adjacent to its proposed location.
 - The proposed design of the Project integrates the amphitheater with the new multi-purpose recreational trail, and utilizes existing parking areas already used for other special events. It adds a similar and compatible use to an area that is already accustomed to large, seasonal special events and recreational land use (i.e., the State Fair).
- Due to the overall consistency with existing conditions and stated plans, no significant impacts to community character are expected. Therefore, no mitigation measures are proposed.





COMMUNITY FACILITIES AND SERVICES

(DEIS SECTION 3.14)

Potential Impacts



- Temporary closures may affect the new multi-purpose recreation trail during Project construction; no other community facilities or services will be significantly impacted during construction.
- Facility operation will result in an increased demand for certain community facilities and services during events at the amphitheater, including emergency services, solid waste disposal, water supply, and sanitary wastewater treatment.

Proposed Avoidance/Mitigation Measures

- To provide adequate emergency services coverage by the Onondaga County Park Rangers and Onondaga County Sheriffs, efforts will be made to avoid scheduling major events at the Lakeview Amphitheater concurrently with the Jamesville Balloonfest, Golden Harvest Festival, JP Morgan Corporate Challenge, or Syracuse Jazz Fest. If multiple events are scheduled on the same day/weekend, then additional mitigation options will be implemented as needed (e.g., hiring temporary personnel).
- Since there will be no other potentially adverse impacts to community facilities and services from the proposed Project, no further mitigation measures are proposed.





ALTERNATIVES ANALYSIS (DEIS SECTIONS 5.0 - 5.4)

Alternatives Evaluated in the DEIS:

- Alternative Project Location
 - Lakeview Point
 - Maple Bay
- Alternative Project Design and Scale
 - “Cove Concept”
 - “Beacon Concept”
- No Action





ALTERNATIVE PROJECT LOCATION





ALTERNATIVE PROJECT DESIGNS



“Beacon Concept”



“Cove Concept”





COMMENT ON THE DEIS

The DEIS is Available for review at:

- Onondaga County website:
<http://www.ongov.net/environment/amphitheater.html>
- Solvay Public Library
615 Woods Road
Solvay, New York 13209





COMMENT ON THE DEIS

Comments on the DEIS will be accepted until 4:30 pm on August 11, 2014.

- Mail to: Onondaga County Office of the Environment
Attention: David Coburn, Director
John H. Mulroy Civic Center, 14th Floor
421 Montgomery Street
Syracuse, New York 13202
- Email: DavidCoburn@ongov.net

Thank you for your time and for participating!

